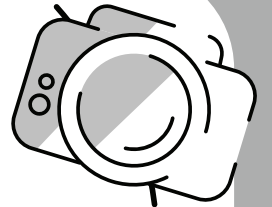




# WORD SCRAMBLE



OLARRADI

OOKL

SELNTI

RISGNOSC

KSOCRSUCB

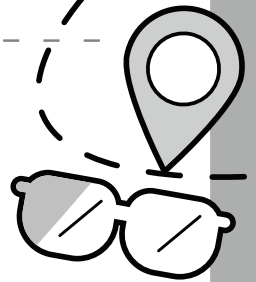
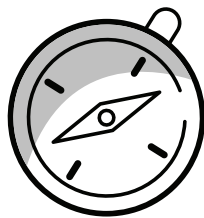
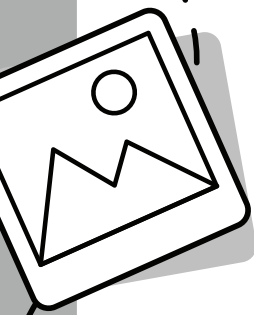
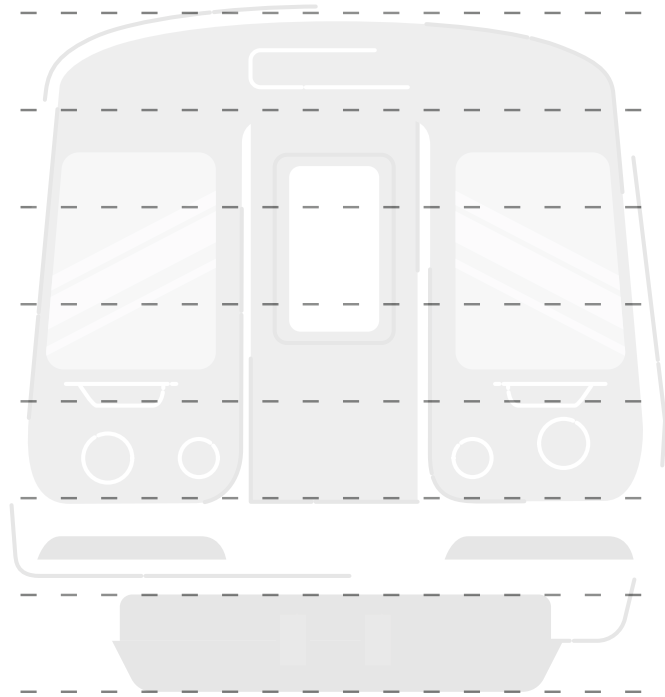
BAWYUS

RSCATETER

GLHIT IRLA

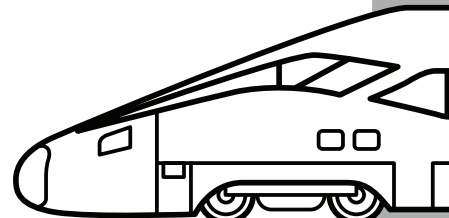
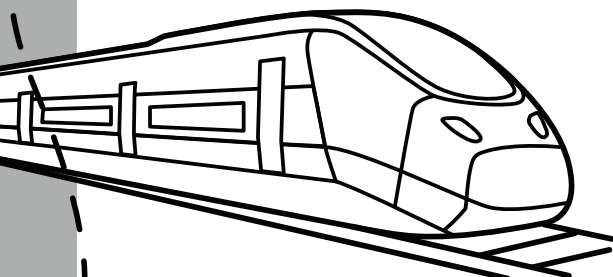
UTMCRMEOE RLAI

ESE CAKRTS KNIHT RTIAN



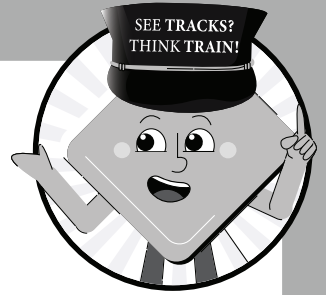
Railroad, Look, Listen, Crossing, Crossbuck, Subway, Streetcar,  
Light rail, Commuter rail, See Tracks Think Train

## ANSWERS

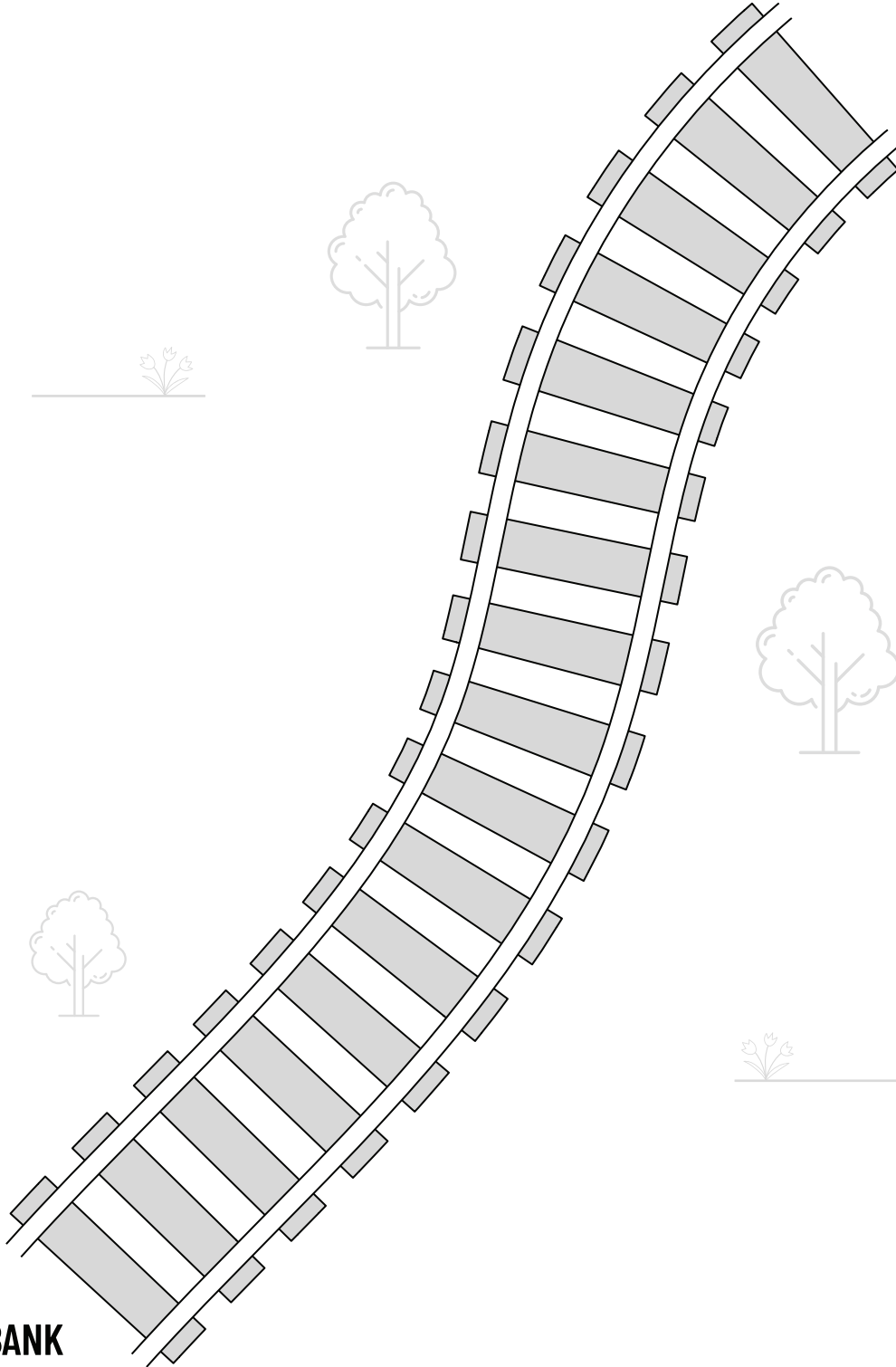




# SPY WITH YOUR EYES



Draw the things you see on your train journey.



## WORD BANK

Train - Warning sign - Crossbuck - Flashing lights - Train station - Multiple Track Sign - Car - Bicycle - ...

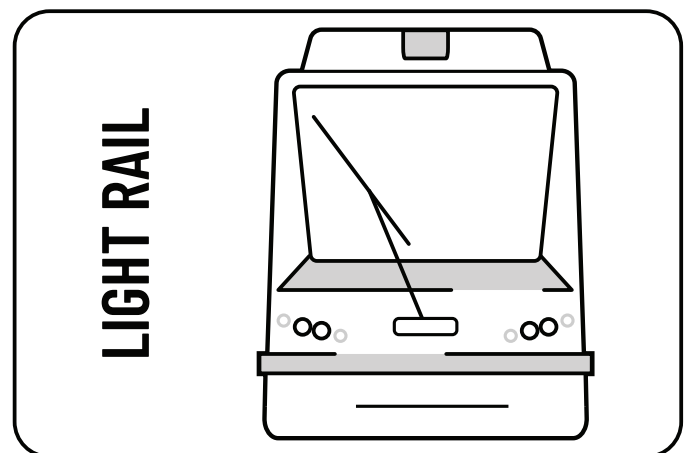
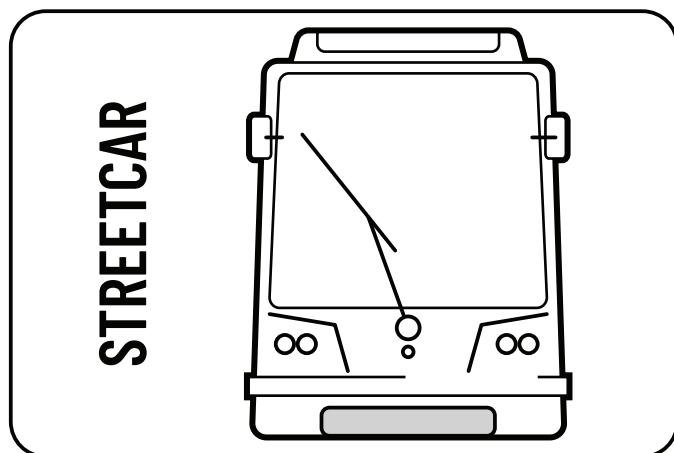


# FILL IN THE BLANKS

1. Mind the \_\_\_\_\_ between the platform and the train.
2. Stay \_\_\_\_\_ around railroad tracks.
3. Remember to cross train tracks \_\_\_\_\_ at designated pedestrian or roadway crossings.
4. Never \_\_\_\_\_ on tracks; it's illegal trespass and highly dangerous.
5. Trains can transport either people and \_\_\_\_\_.
6. Always stand behind the \_\_\_\_\_ colored line at station platforms.
7. Pay attention to all \_\_\_\_\_ at the station.
8. \_\_\_\_\_ run in the middle of the street and share the road with cars.
9. Trains can run on \_\_\_\_\_ track at \_\_\_\_\_ time.
10. Trains are \_\_\_\_\_ than their tracks.

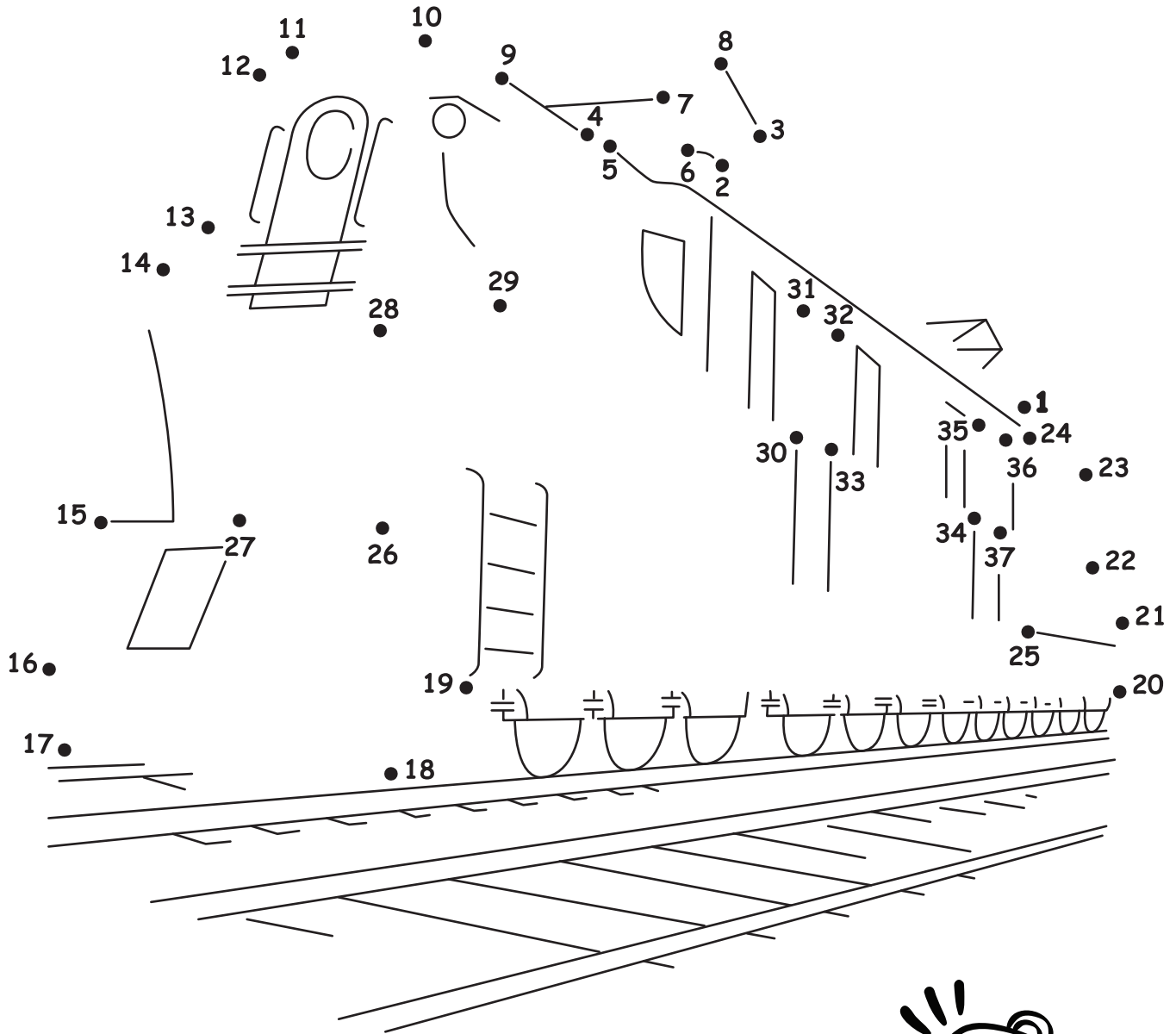
1. Gap 2. Alert 3. Only 4. Walk 5. Freight 6. Bumpy  
7. Announcements 8. Streetcars 9. Any, Any 10. Wider

## ANSWERS





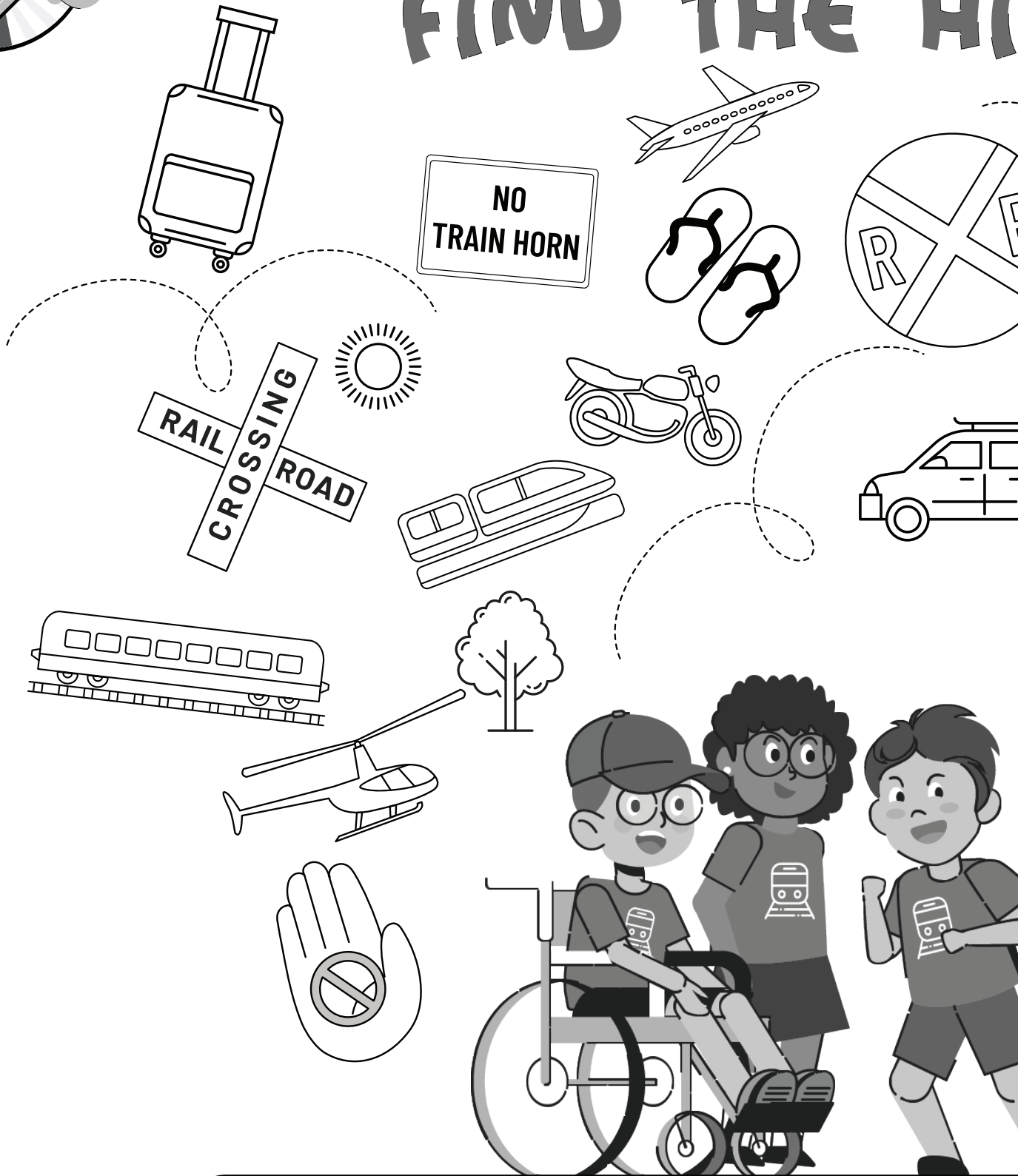
# CONNECT THE DOTS



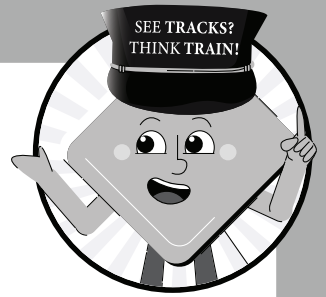




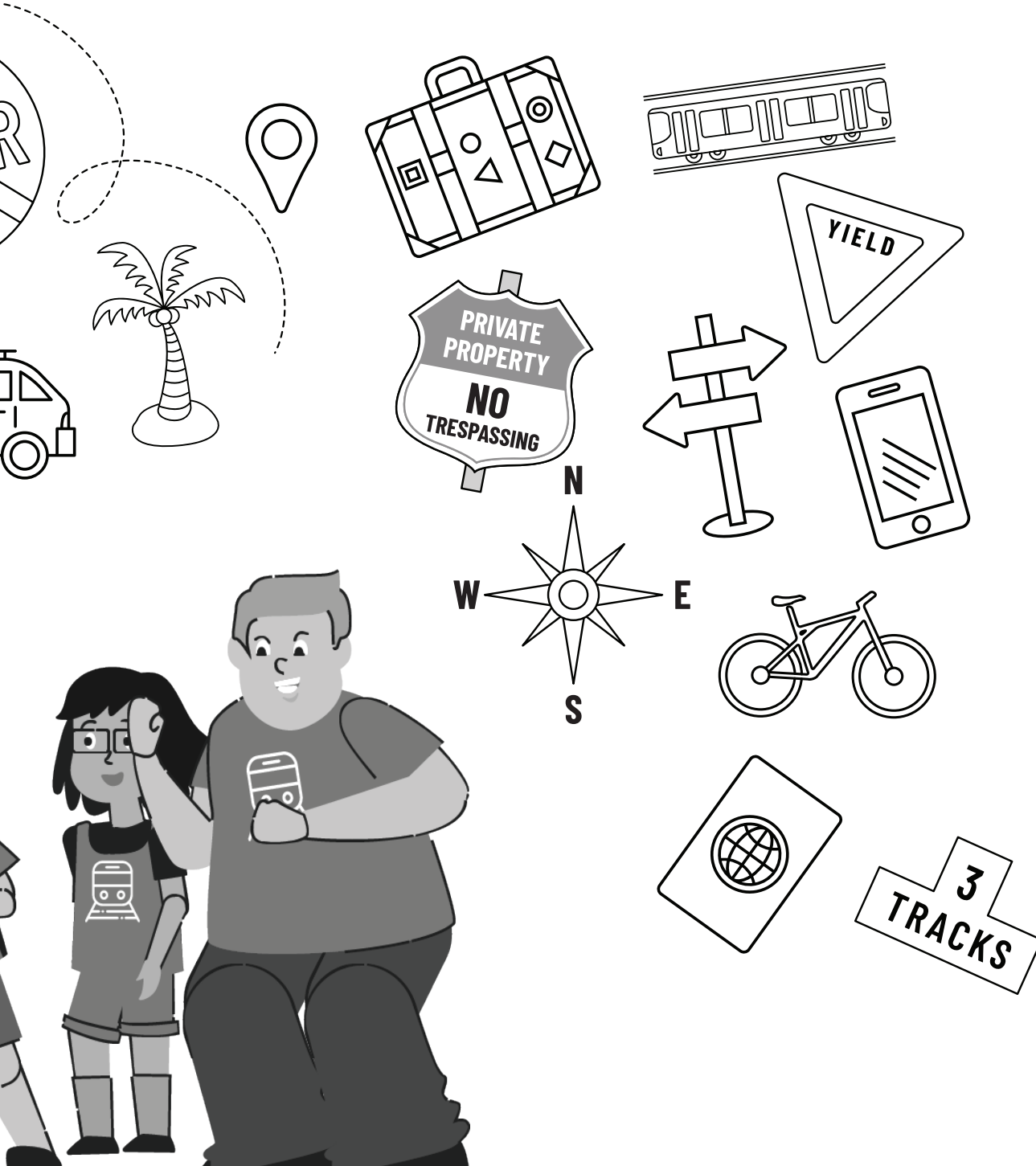
# FIND THE HIDE



- BICYCLE
- YIELD SIGN
- NO TRESPASSING SIGN



# HIDDEN ITEMS



**TRAIN**

*(there are more than 1!)*

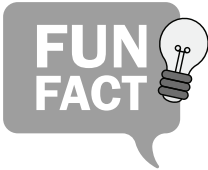
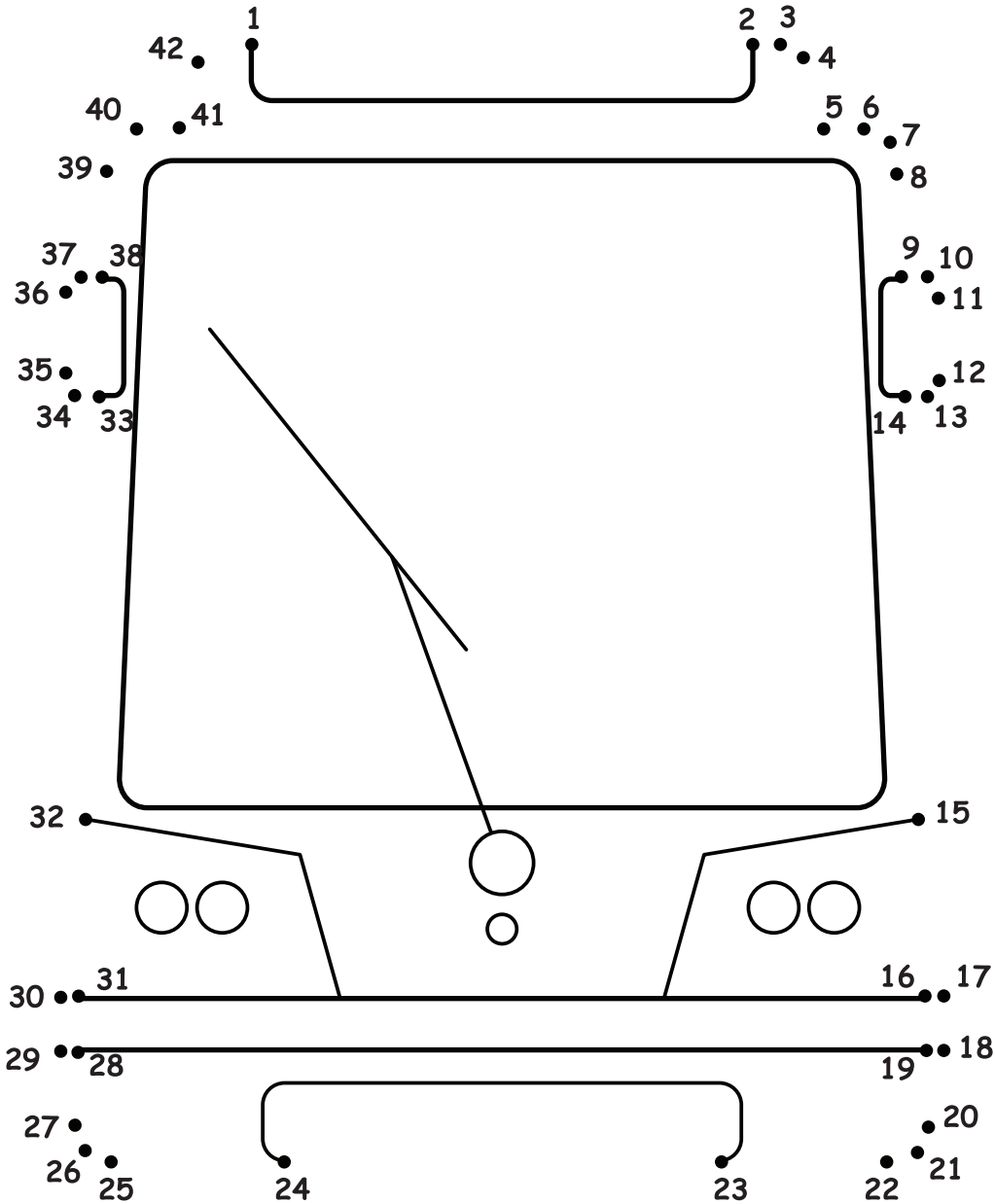
**CROSSBUCK**

**CELL PHONE**



# ★CONNECT THE DOTS★

Connect the dots to create a Streetcar.



"Streetcars travel on tracks that are part of the roads. They can also be called trams or trolleys. While trains often have multiple cars attached to each other, streetcars usually travel one car at a time and use electricity to work."



# COLOR THE TRAINS

YOU SEE BELOW\*

Only trains belong on **TRACKS**

